

MAKE YOUR OWN HERITAGE TRAIL (in lockdown)



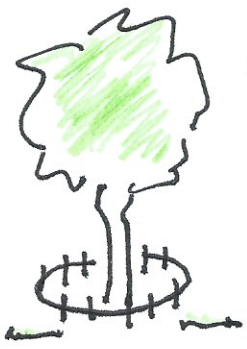
Person on lockdown takes a walk in their local community



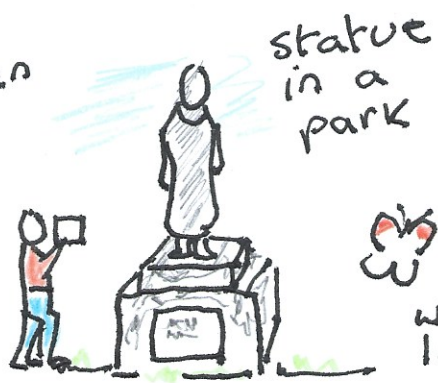
Victorian letter box

observes and records any heritage/historic features

photos + notes

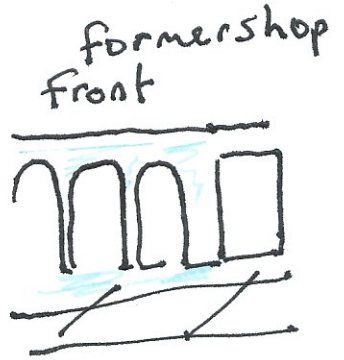


old specimen trees



statue in a park

wild life



formershop front



interesting old building



writes their own narrative of the walk to include natural world.

(including research into any local features encountered.)



+ add personal material, family etc photos taken previously on walk.

- + . School used to go to
- . house previously lived
- . house where born

TO PRODUCE THEIR OWN HERITAGE TRAIL

